

Aesculap Spine CLR

Caspar Lumbar Retractor System



Strength and Versatility

Improved access through strength and versatility

Retractors have been valued partners to surgeons in countless operations for many years, ensuring stable access to the surgical site, providing good visibility, and allowing the surgeon the freedom to perform the operation without hand retraction.

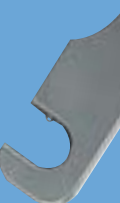
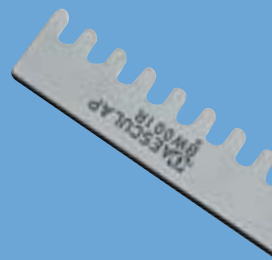
The CASPAR Lumbar Retractor (CLR) concept is based on Dr. Caspar's trusted and valued cervical retractor. Applying the same philosophy, Aesculap is now able to offer all the advantages of the cervical system for the lumbar spine:

a stable system for safely retracting muscles and other tissue during the entire operation. Once retracted, the system remains in place until the operation is complete. The quick, easy, and precise handling characteristics ensure comfort for the surgeon.

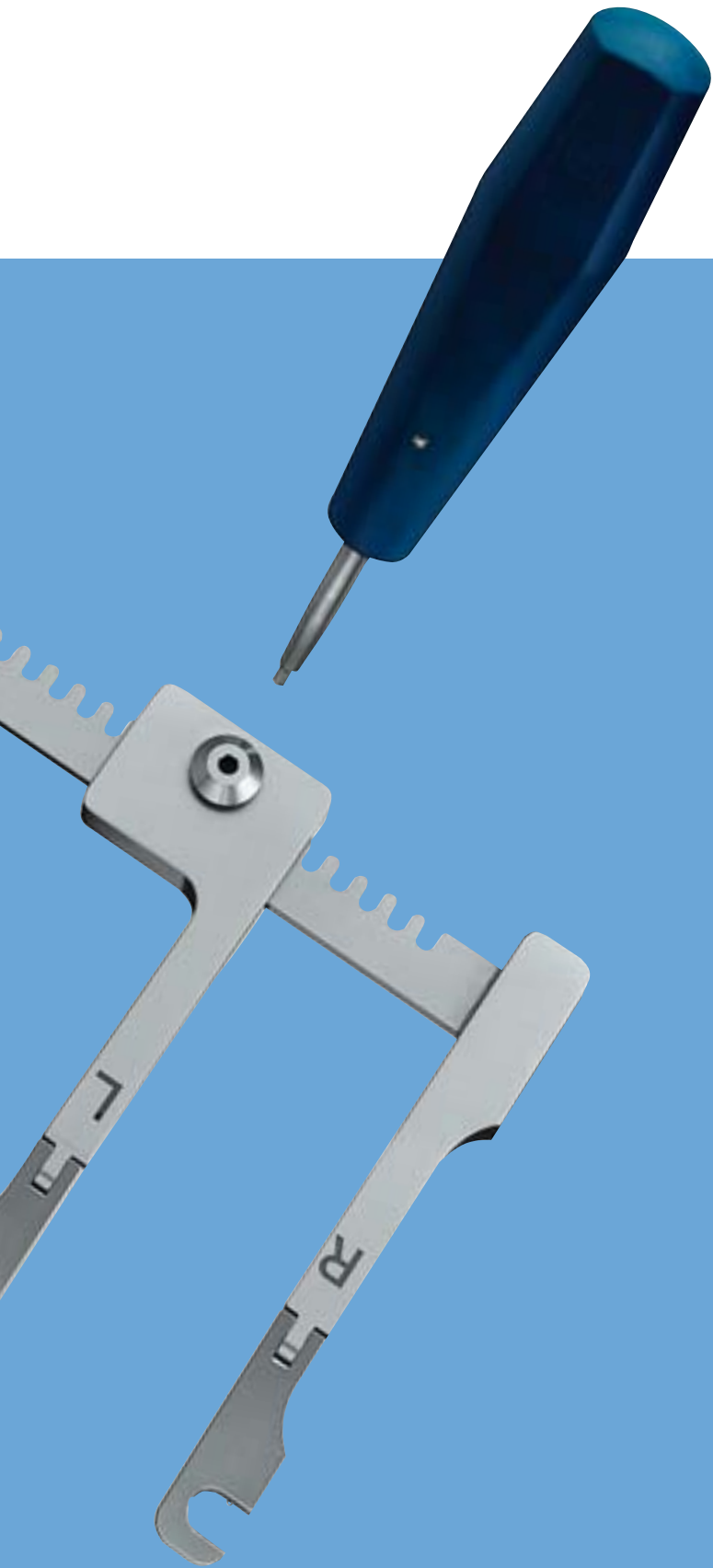
Titanium blades allow the retractor to be left in place during radiographic imaging, saving time without obstructing the view of the spine. The new fenestrated, toothed blade design enhances the stability in the surgical site.

The side-loading mechanism makes the assembly of the retractors and blades quick and easy. Multiple sizes allow the surgeon to optimize his surgical area to minimize the surgical site.

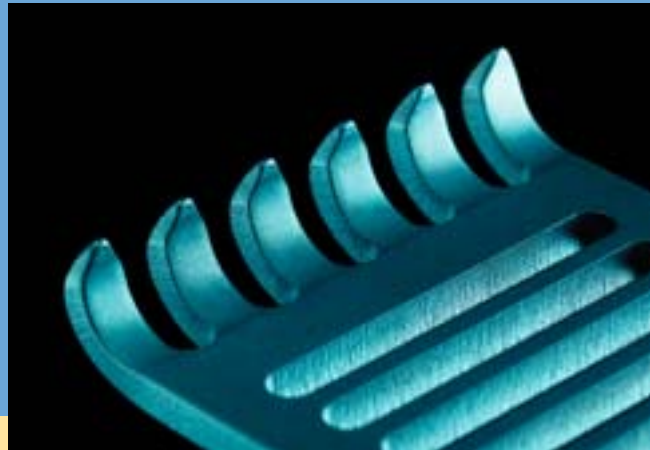
The CASPAR Lumbar Retractor system is ideal for lumbar spine surgery. The retractors can be applied for medial and paraspinous approaches to perform discectomies, pedicle screw fixation, and many other procedures. The CASPAR Lumbar Retractor system will be a valued partner for any spine surgeon.



Compatible with top-loading "ball-snap" mechanism



Joints to improve retractor positioning



Tissue-preserving tooth shape



Strong and stable, yet radiolucent

CLR components

Blades

| | |
|--------|------------|
| BW020T | 20 x 35 mm |
| BW021T | 20 x 40 mm |
| BW022T | 20 x 45 mm |
| BW023T | 20 x 55 mm |
| BW024T | 20 x 65 mm |



| | |
|--------|------------|
| BW030T | 40 x 35 mm |
| BW031T | 40 x 40 mm |
| BW032T | 40 x 45 mm |
| BW033T | 40 x 55 mm |
| BW034T | 40 x 65 mm |
| BW035T | 40 x 75 mm |



| | |
|--------|------------|
| BW040T | 60 x 35 mm |
| BW041T | 60 x 40 mm |
| BW042T | 60 x 45 mm |
| BW043T | 60 x 55 mm |
| BW044T | 60 x 65 mm |
| BW045T | 60 x 75 mm |
| BW046T | 60 x 85 mm |



Hook

| | |
|--------|---------------------------------|
| BW028T | Hemi-laminectomy hook, small |
|--------|---------------------------------|



| | |
|--------|---------------------------------|
| BW038T | Hemi-laminectomy hook, large |
|--------|---------------------------------|





Accessories

BW010R

Handle for blade positioning

Note:

Two handles are required for each system..



BW011P

Depth gauge instrument



BW001R

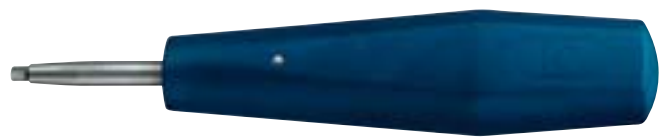
CLR retractor

Length of rack - 160mm



TE749R

Hex key



CLR set configuration

BW120



| Art. no. | Width | Length | Description |
|--------------------|-------|--------|-----------------------------|
| BLADES | | | |
| BW020T | 20 mm | 35 mm | Blade |
| BW021T | 20 mm | 40 mm | Blade |
| BW022T | 20 mm | 45 mm | Blade |
| BW023T | 20 mm | 55 mm | Blade |
| BW024T | 20 mm | 65 mm | Blade |
| BW030T | 40 mm | 35 mm | Blade |
| BW031T | 40 mm | 40 mm | Blade |
| BW032T | 40 mm | 45 mm | Blade |
| BW033T | 40 mm | 55 mm | Blade |
| BW034T | 40 mm | 65 mm | Blade |
| BW035T | 40 mm | 75 mm | Blade |
| BW040T | 60 mm | 35 mm | Blade |
| BW041T | 60 mm | 40 mm | Blade |
| BW042T | 60 mm | 45 mm | Blade |
| BW043T | 60 mm | 55 mm | Blade |
| BW044T | 60 mm | 65 mm | Blade |
| BW045T | 60 mm | 75 mm | Blade |
| BW046T | 60 mm | 85 mm | Blade |
| INSTRUMENTS | | | |
| BW001R | | | CLR Retractor |
| TE749R | | | Hex Key |
| BW010R | | | Handle for blades |
| BW011P | | | Depth gauge |
| BW028T | | | Hemi-laminectomy hook small |
| BW038T | | | Hemi-laminectomy hook large |
| BW121P | | | CLR Tray |
| BW120 | | | CLR set, complete |



Perfect fit

Varying anatomical situations and approach choices call for a system that can adjust precisely, but be extremely versatile. Therefore, the CASPAR Lumbar Retractor system is designed for a precise fit, regardless of the location in the lumbar spine.

Modular, interchangeable system

- Can be used with a choice of many different blade widths and lengths

Joints

- Contouring to the shape of the body
- Better fixation in the correct position

Side-loading quick-lock mechanism

- Simple and quick connection
- Compatible with traditional top-loading ball-snap mechanism
- Convenient handle for inserting the blades

Easy positioning of the blades

- No need for additional hand-held retractors
- Easy-to-turn retraction mechanism

Choice of blade width

- 60 mm for multisegmental access
- 40 mm for bisegmental access
- 20 mm for monosegmental access

Tissue-preservation

- Gentle and safe grip with teeth at the end of the blades
- Solid tissue retraction with fenestrated design

X-ray transparency

- Titanium fenestrated blades provide a good view of spinal instrumentation during radiographic imaging

Light-weight

- Titanium blades are easy to handle intra operatively



AESCULAP®

B | BRAUN
SHARING EXPERTISE

Aesculap AG & Co. KG

Am Aesculap-Platz
78532 Tuttlingen
Germany

Phone +49 7461 95-0
Fax +49 7461 95-2600

www.aesculap.de

All rights reserved. Technical alterations are possible. This leaflet may be used for no other purposes than offering, buying and selling of our products. No part may be copied or reproduced in any form. In the case of misuse we retain the rights to recall our catalogues and pricelists and to take legal actions.